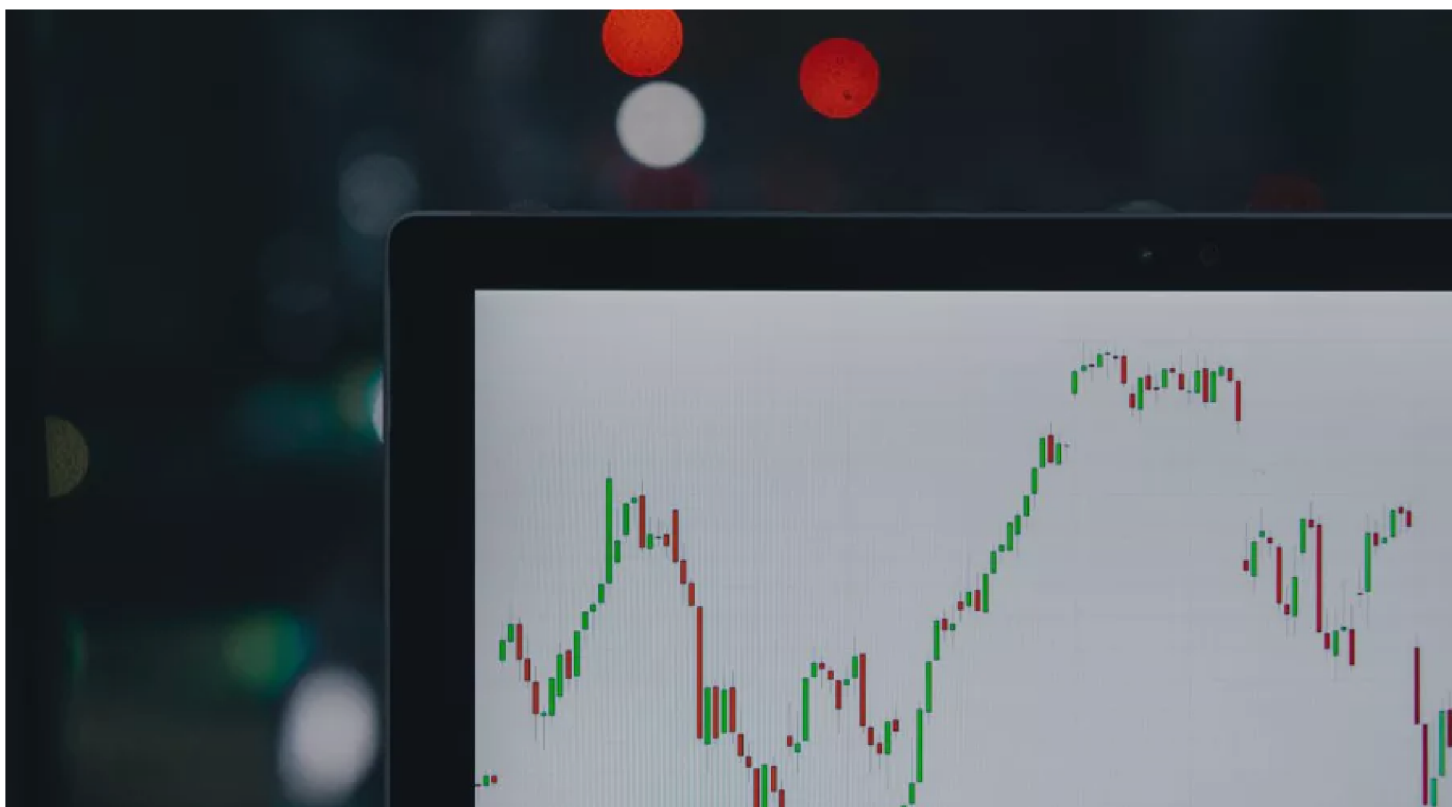


Bank of England report shows chancellor must support all workers



Huge uncertainty across the economy makes it even more important statutory sick pay is increased

GMB Union has commented on the 'shocking' Bank of England report [1] into business conditions following the COVID-19 outbreak.

Tim Roache, GMB General Secretary, said:



"Coronavirus is already doing shocking damage to our economy and this could only be the beginning.

"Huge uncertainty across the economy makes it even more important the Chancellor acts urgently to support all workers, including raising statutory sick pay.

"Continued Government action is needed now to steer through these dark times and provide light at the tunnel for economic recovery.."

Press office

079859 1525698

press.office@gmb.org.uk

Member requiring help?

[Click to contact your local GMB Region](#)

info@gmb.org.uk

