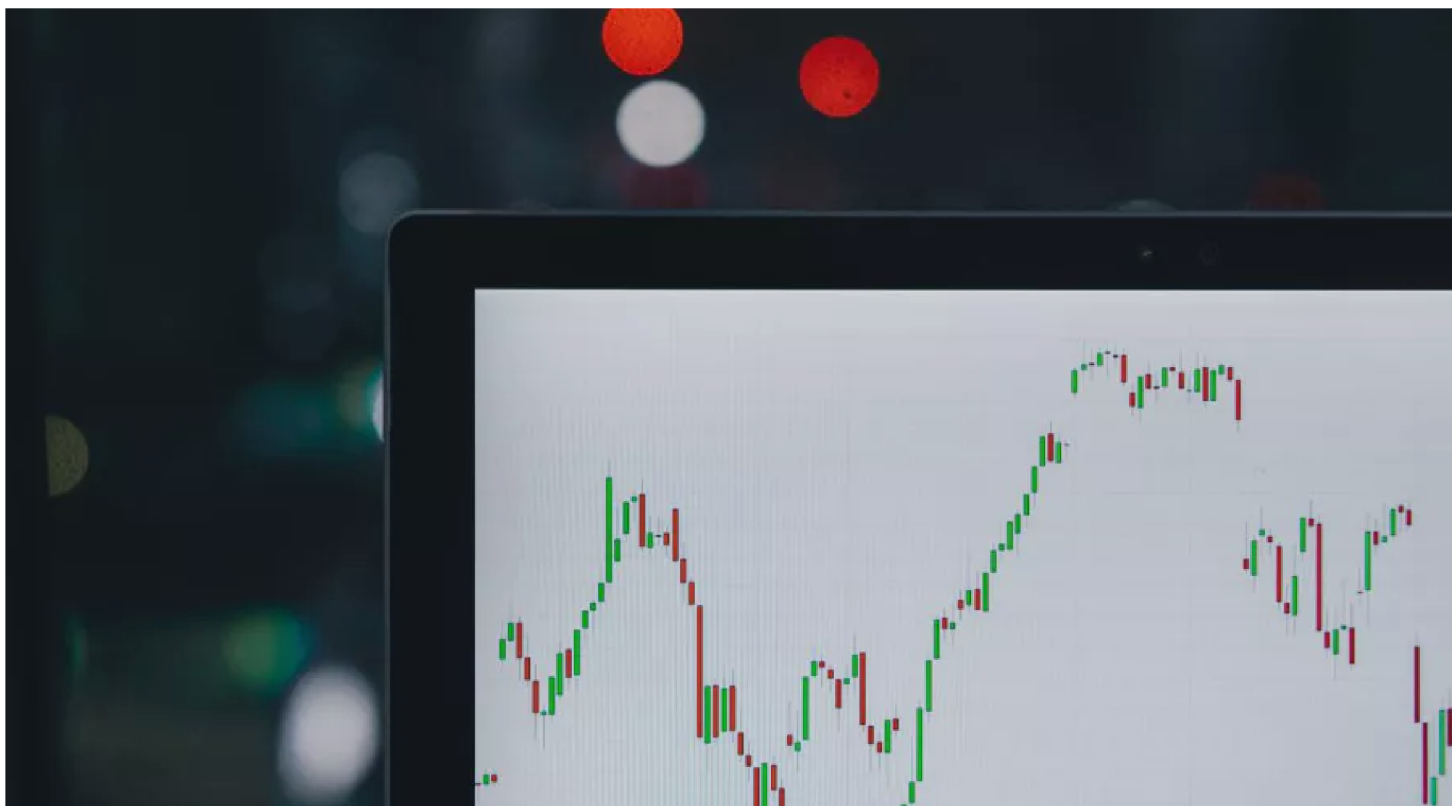


# Flat growth showing UK 'juddering to a halt' under the Tories



**GMB, Britain's general union, has responded to today's official growth figures from the ONS by accusing the Government of bringing the UK to a 'Juddering Halt'**

The latest figures released today from the ONS showed flat GDP growth from August to October.

**Jude Brimble, GMB National Officer said:**

"The U.K. economy has come to a juddering halt, choked by a Conservative feel-bad factor.

"British manufacturing has been driven into reverse after years of government neglect, a damaging approach to Brexit and a complete lack of industrial strategy."



“We need an immediate change of direction and a Labour government with a plan for the future of British manufacturing to provide much needed confidence, investment and jobs.”

**“** Today's GDP figures confirm the weakest growth in a decade.

And looking at annual figures up to 2018, Britain's recovery since the global financial crisis has been the slowest for more than a century.

This is the legacy of a decade of Tory cuts and economic mismanagement.

[pic.twitter.com/X7jBlqXcPA](https://pic.twitter.com/X7jBlqXcPA)

— Trades Union Congress (@The\_TUC) **December 10, 2019**

---

### Press office

07958 156846

[press.office@gmb.org.uk](mailto:press.office@gmb.org.uk)

### Member requiring help?

Click to contact your local GMB Region

[info@gmb.org.uk](mailto:info@gmb.org.uk)

